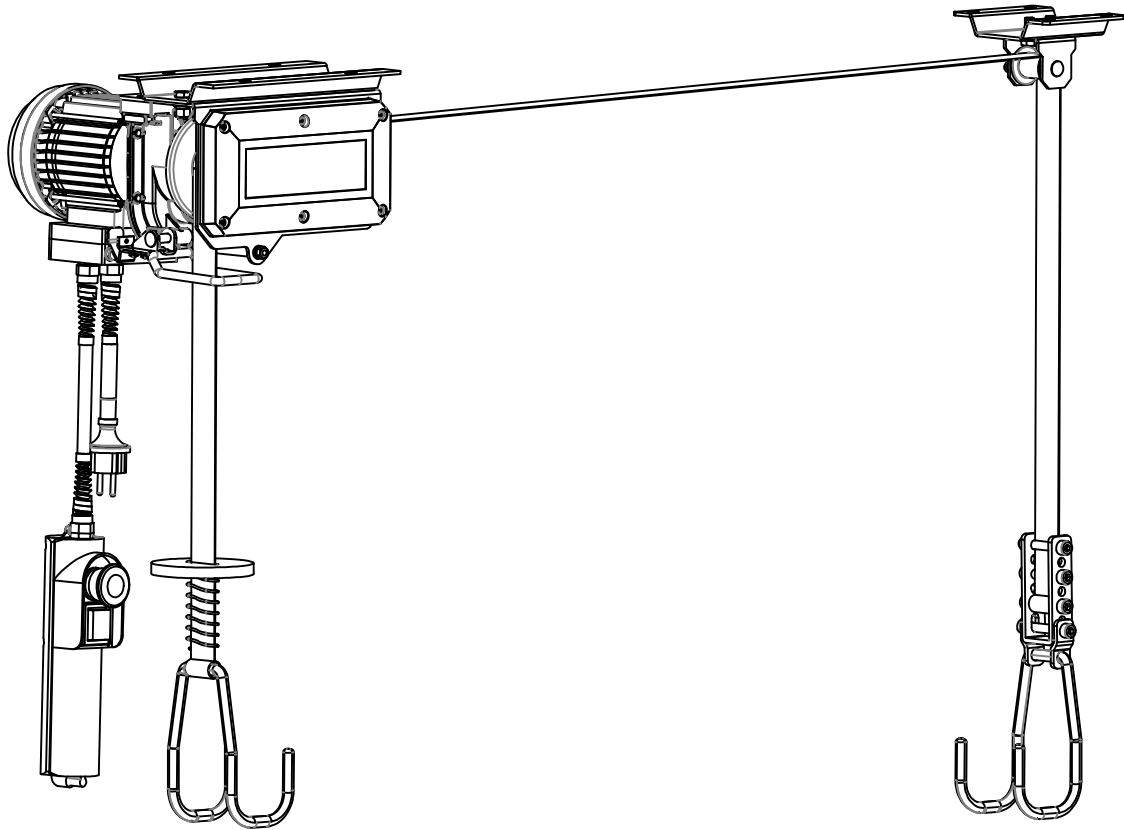


RESIDENTIAL MOTORIZED STORAGE LIFT 100 KGS CAPACITY




FH200S

ASSEMBLY INSTRUCTIONS

Safety Information



WARNING: When you see the safety symbol  on the following pages this will alert you of the possibility of serious injuries or death if you do not comply with the corresponding instructions. The hazard may come from something mechanical or for the electrical shock. Read the instructions carefully!



WARNING

To reduce the risk of severe injury or death:

1. READ AND FOLLOW ALL SAFETY, INSTALLATION AND OPERATION INSTRUCTIONS. If you have any questions or do not understand an instruction contact the local seller.
2. Do not use to lift people or animals.
3. Do not use to support a load over people or animals.
4. Never operate while hand(s) are near moving parts.
5. Do not stand under lift.
6. Let unit cool down for 5 minutes after cycle.
7. Install on a flat level ceiling, or open rafters. Will not operate correctly if installed on an angle.
8. Visually inspect trusses for damage before installing the storage lift.

WARNING: THIS IS A DO IT YOURSELF (DIY) PROJECT. DO NOT ATTEMPT THIS INSTALLATION WITHOUT A BASIC UNDERSTANDING OF THE CONTENTS IN THESE ASSEMBLY INSTRUCTIONS. IF YOU ARE NOT CONFIDENT WITH LOCATING AND ANCHORING THE STORAGE LIFT TO THE CEILING, DO NOT ATTEMPT THIS INSTALLATION WITHOUT SOMEONE WHO IS.

WARNING: DO NOT EXCEED THE WEIGHT LIMITS (Based on model used)

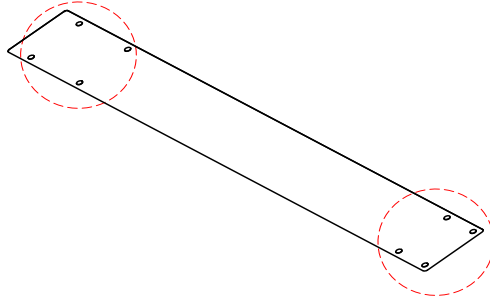
WARNING: This weight limit is based on all lag bolts being secured in the ceiling.

Do not climb on or (if you have a platform) do NOT hang from.

Installation

1 Prepare ceiling

Position the paper mounting template in the installation location and mark with a pencil the 8 spots where the bolts will be fastened.



It is very important that the mounting method depends on the material of ceiling on which the storage lift will be mounted. If the ceiling with wooden bar structure, the lag screw should be used. For steel beam structure, the bolt and nut should be used. For the concrete structure, the expansion bolt should be used.

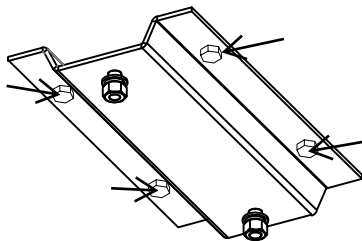


Warning: For wooden structure ceiling, the lag screws must be fastened to the center of the joists. Use the hole saw drill bit or cut away the drywall with a utility knife to obtain an unobstructed view of the width of the joists so the exact center can be easily be determined (covered ceilings only). Also, the weight limit is based on all lag screws being secured in the CENTER of the joists.

2 Install the mounting plate to the ceiling

Using a power drill drill 4 pilot holes into the ceiling.

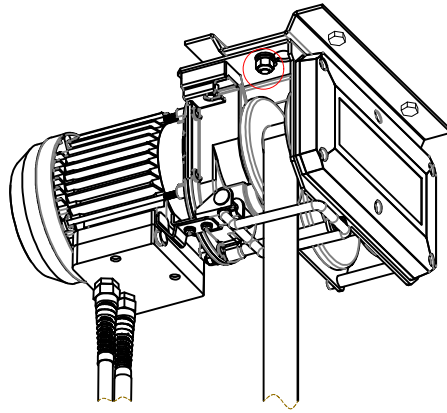
Using the adjustable wrench fasten the 4 bolts into the ceiling until the mounting plate is securely fastened.



3 Attach the motor hoist to the mounting plate.

Slide the mounting tabs on the motor hoist over the top of the 2 fixed, threaded bolts on the mounting plate (If there is not enough room between the washers and the mounting plate for the motor hoist mounting tabs, it will be necessary to loosen the nuts by turning them counter clockwise.)

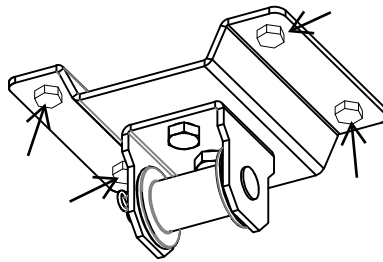
Once the motor hoist is properly positioned on the motor mounting plate tighten the nut with the ratchet or the adjustable wrench until the motor hoist is securely attached to the mounting plate.



4 Install the pulley plate to the ceiling

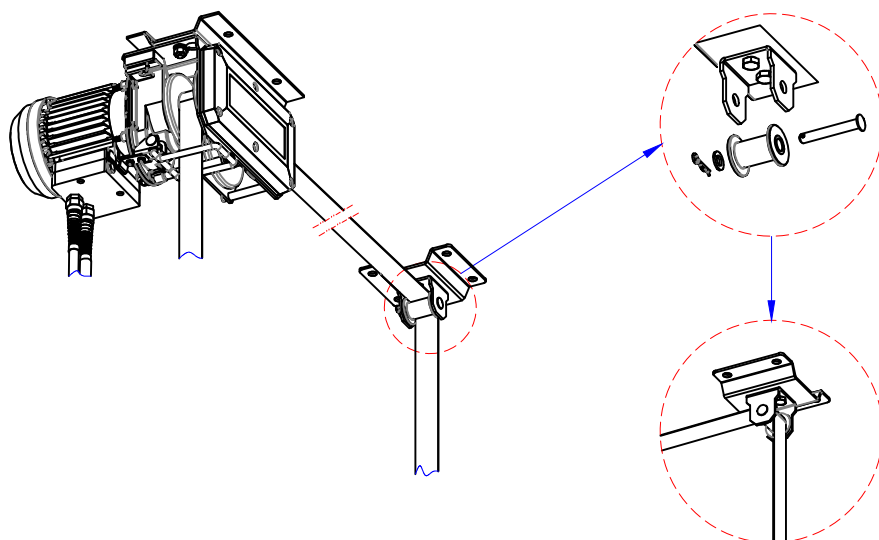
Using a power drill drill 4 pilot holes into the ceiling.

Using the adjustable wrench fasten the 4 bolts into the ceiling until the mounting plate is securely fastened.



5 Install straps

Once the strap has been placed over the pulley, reinstall the pulley to its original position, insert the clevis pin and refasten the cotter pin.

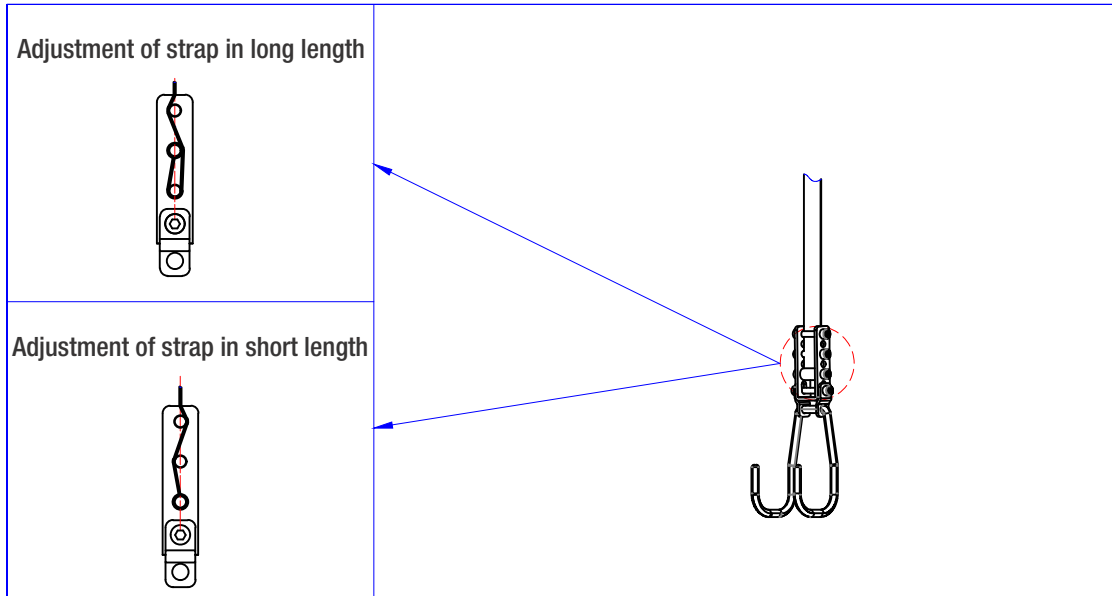


6 Level

The height adjustment bracket is adjustable to make your straps and 2 hooks perfectly level. If these 2 hooks is not level, adjust the pin in the height adjustment bracket to the desired hole to make your straps and hooks level.



It is very important that the bolt on the adjustment bracket must be fastened after the adjustment of the strap is finished.



Specifications

Model: FH200S

Load capacity: 100 KGS

Lifting Height: 3m

Lifting speed: 8m/min

Voltage: 230 V / 50 HZ / 2.0 amps

Motor: 450W

Maintenance

Check to be sure the motor is properly attached to its mounting plate. Make sure the bolts are tight.

Periodically check the condition of the electrical cords, plugs and controls.

Periodically check cables for slippage or excessive wear.